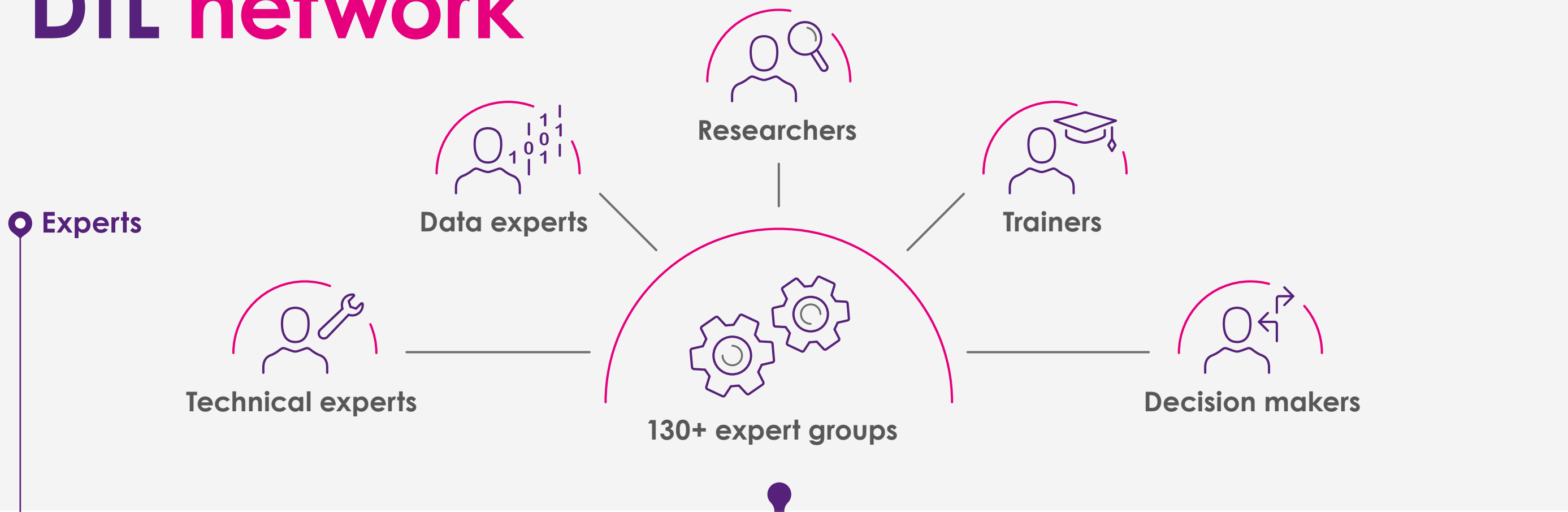


# DTL network



**Technologies**



Genomics



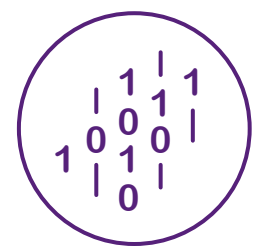
Proteomics  
Structural biology



Metabolomics



Bioimaging Phenotyping  
Medical imaging

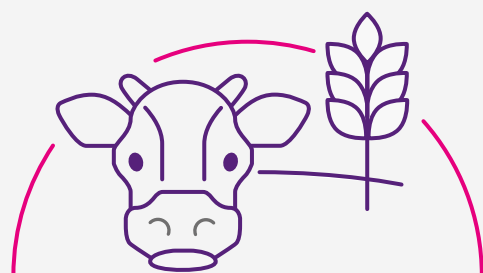


Bioinformatics  
Systems biology

**Life science domains**



Biomedical & health



Agri & Food



Industrial biotech



Biodiversity & ecology

**50+ partners**

DTL Foundation



**Highlights**



FAIR Data



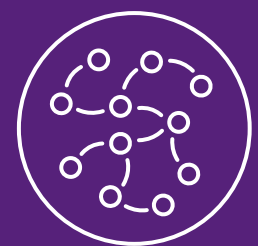
Research Data  
Management



Technology  
Hotels



Training &  
Education



Large research  
infrastructure initiatives